

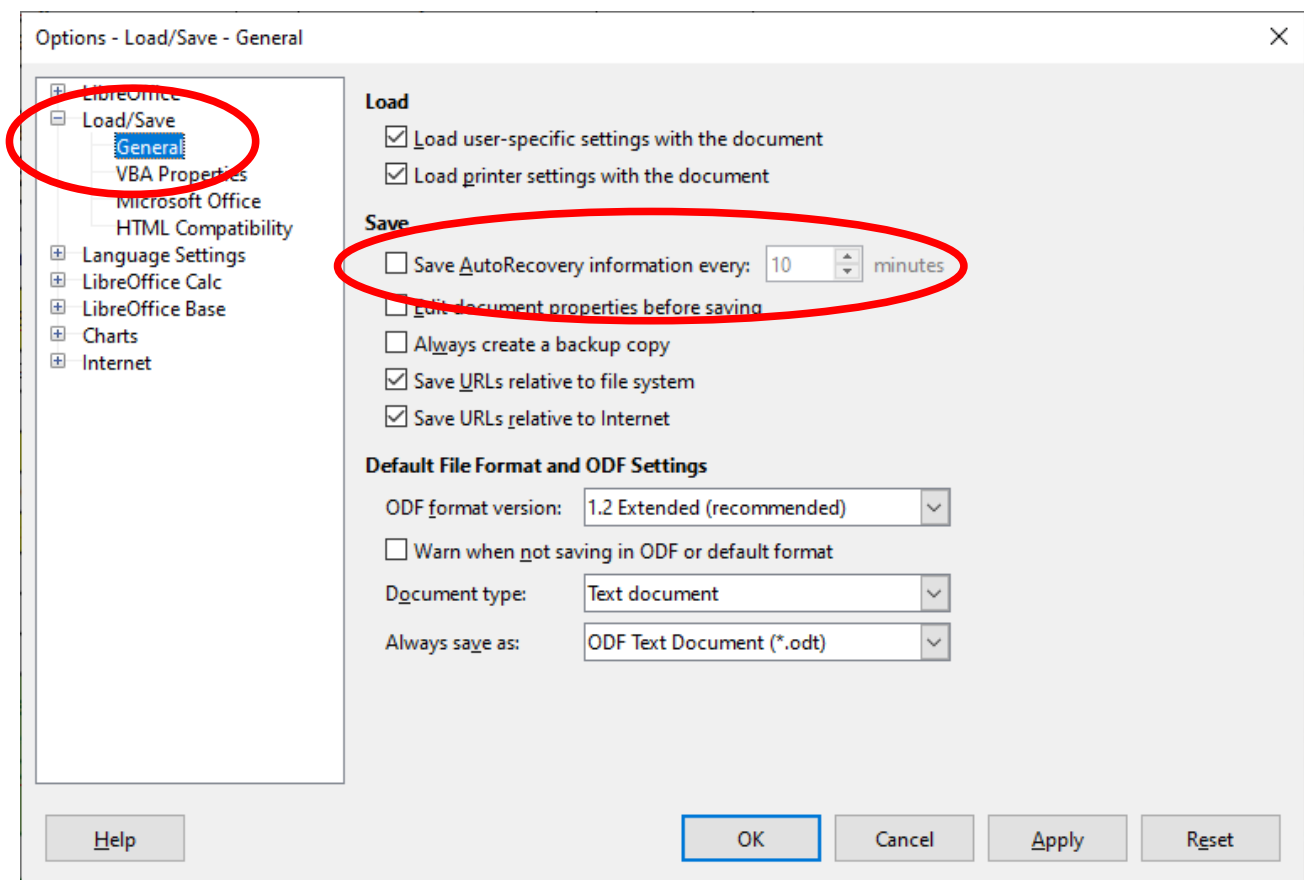
# Using the RSGB EMF Calculator in *LibreOffice Calc*

Although the *RSGB EMF Calculator* spreadsheet was compiled in *Microsoft Excel*, it is possible to open the .xlsx file and use it directly in *LibreOffice Calc*. However there are a couple of options which must first be set to ensure correct behaviour:

## 1. Disable Autorecovery

When the RSGB Calculator was first introduced in March 2021, opening it in *LibreOffice Calc* led to repeated error messages about password protection. Dave G10GY found the solution for this: turning off the **Save AutoRecovery information** function.

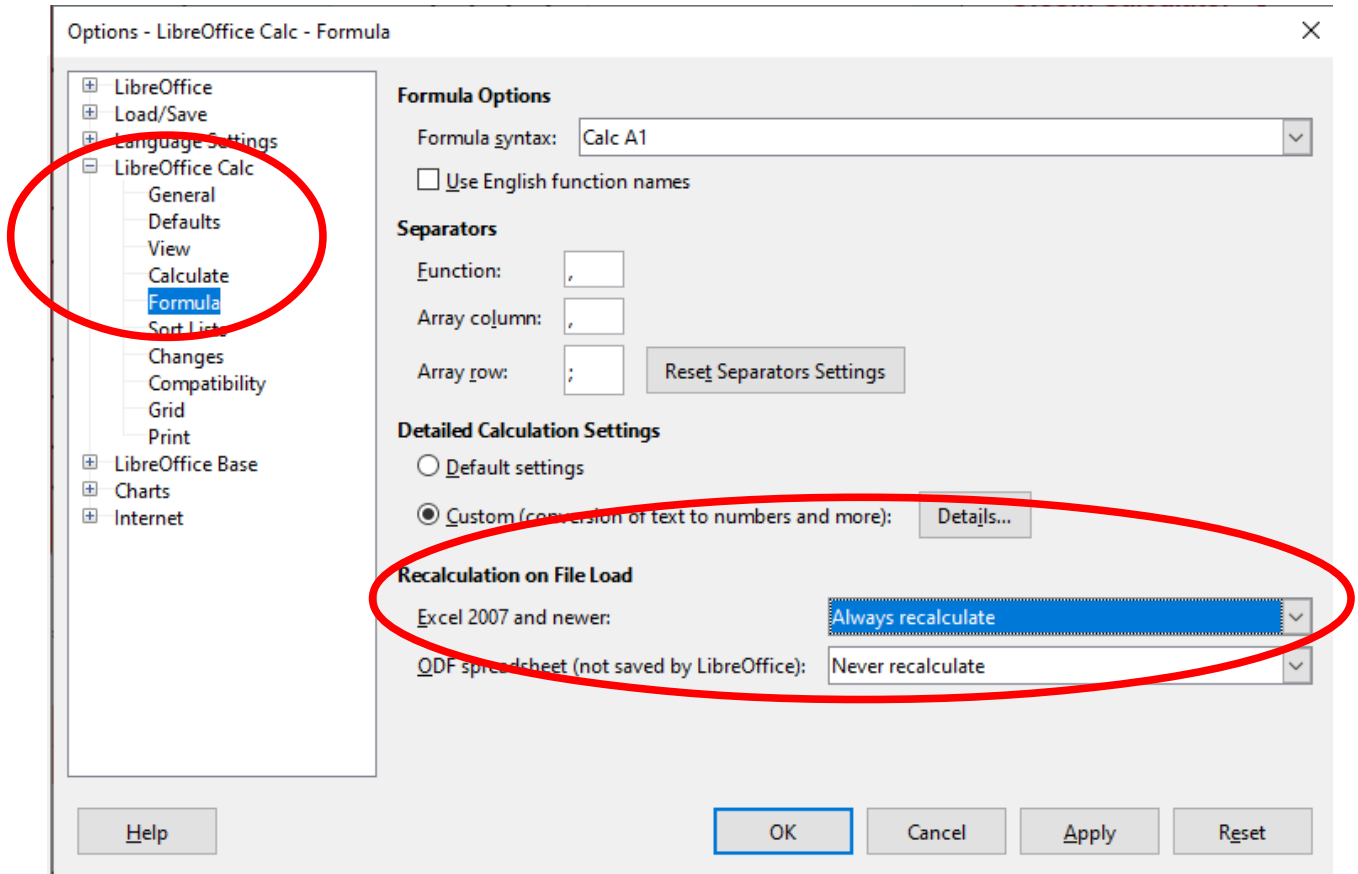
This is in the **Tools..Options..Load/Save..General** menu – just untick the check-box:



## 2. Enable Recalculation

Then when the **PAEC-2 Exclusion Zones** were incorporated in October 2021, Ross G6GVI discovered that *LibreOffice Calc* was not updating the numbers in the Exclusion Zones panel. Thanks to John MOJAV, this was traced to the **Recalculation on File Load** option: this should be set to **Always Recalculate** for *Excel* files.

This is in the **Tools..Options..LibreOffice Calc..Formula** menu – the option is in a pull-down list:



It's important to then confirm that the Recalculation is working – otherwise the values displayed in the Exclusion Zones panel will be misleading. An easy way to check is to increase the Transmitter/linear Power by a factor of ten and see that the Exclusion Zone grows in size (*but don't forget to return it to the correct value before saving your spreadsheet!*).